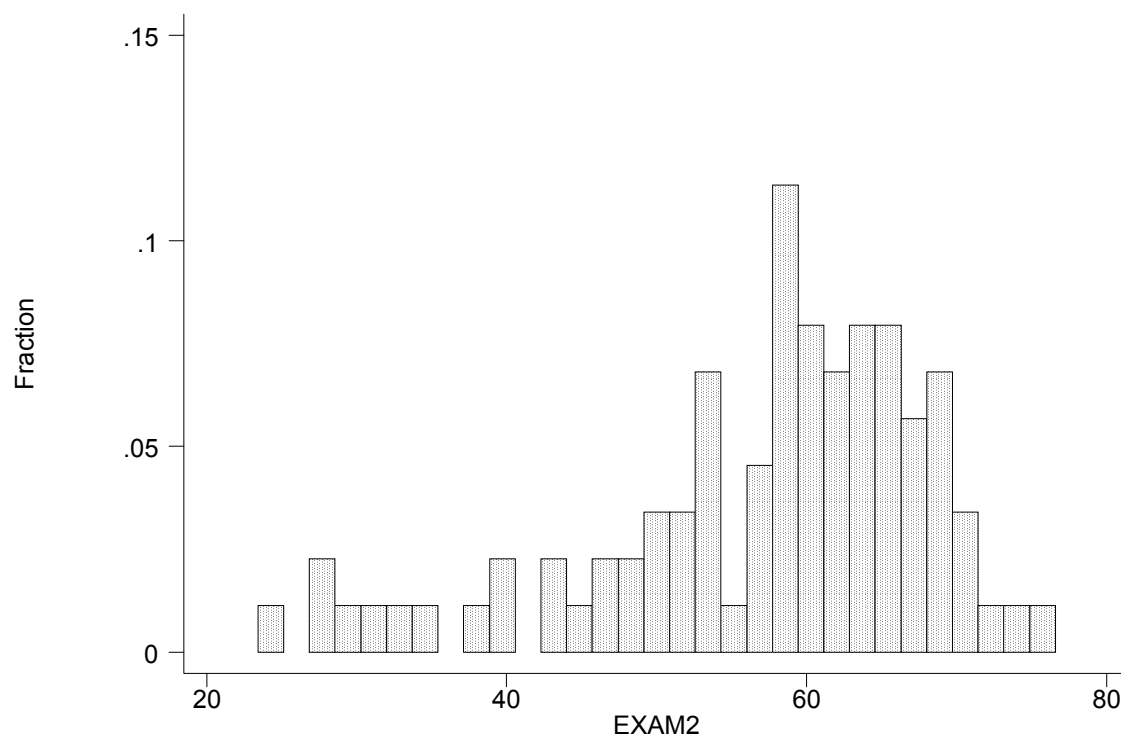


EXAM2

Percentiles			Smallest			
1%	24	24				
5%	31	27				
10%	39	27	Obs	88		
25%	52	30	Sum of Wgt.	88		
50%	59.5		Mean	57		
		Largest	Std. Dev.	11.40175		
75%	65	71				
90%	69	72	Variance	130		
95%	71	74	Skewness	-1.08625		
99%	75	75	Kurtosis	3.74082		



You could think about your second exam in the following way. All cut-offs are approximate.

75-63 "A" grade

62-56 "B" grade

55-43 "C" grade

below 43 did not pass the second exam

After two exams, you can use these ranges as guidelines:

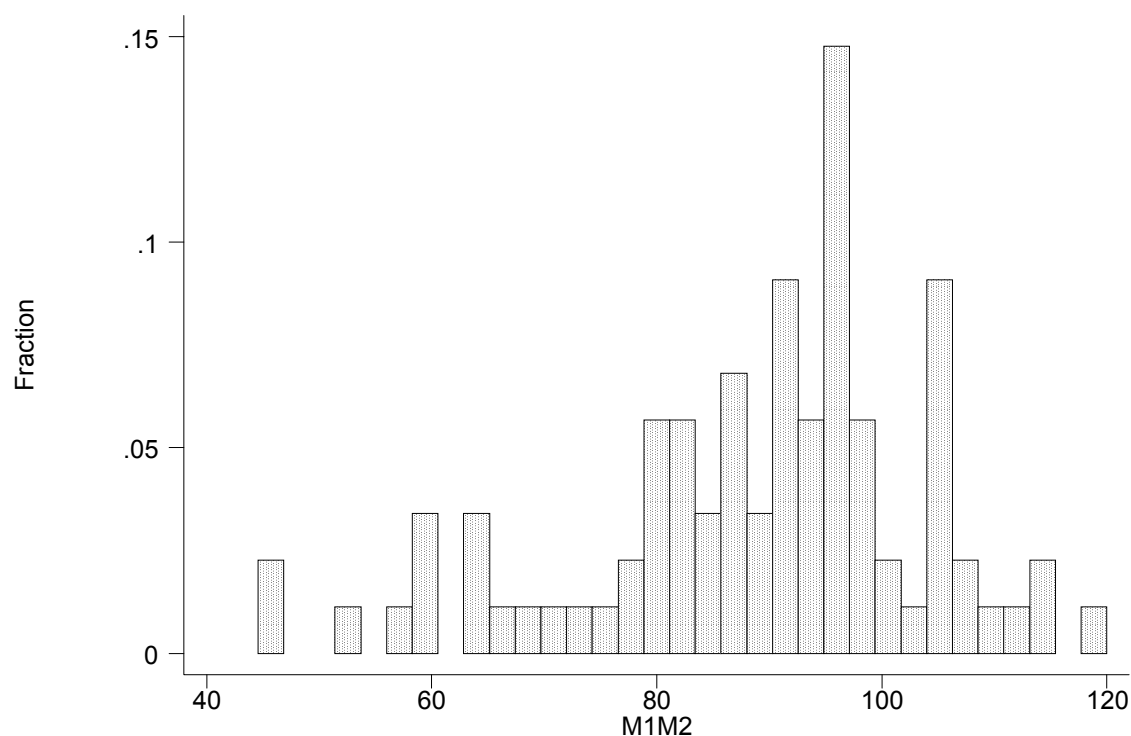
99 and higher "A" grades (minuses on the low end)

98-83 "B" grades (minuses on the low end)

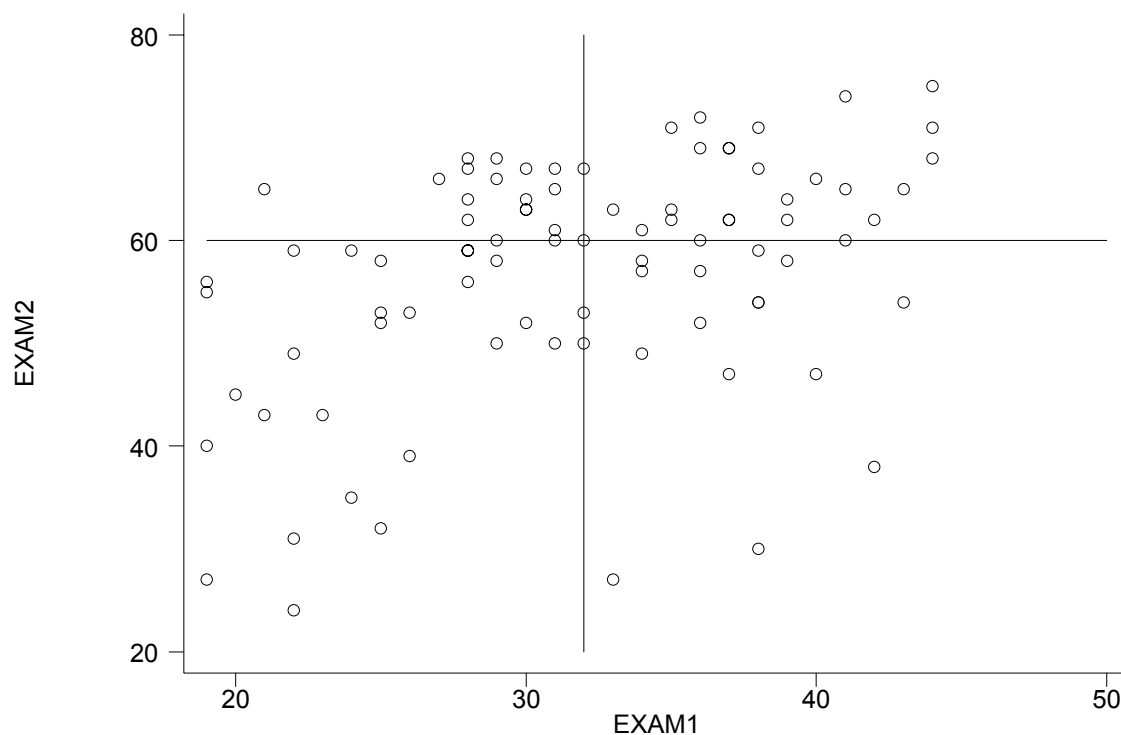
82-64 "C" grades (no minuses)

below 64 not passing the course

The distribution of the combination of the first and second test totals by student is on the next page:



The next graph gives you a sense of who improved and who did not. If your pair of scores lands you in the upper left quadrant (below average on the first, above on the second), good job!



You have until 5pm Nov 25, 2002 to submit a challenge in writing. E-mail is considered "in writing" but I will need your exam to make a decision. Please remember that responses on your answer sheet, which I keep, are considered the final answers for a problem. If there are differences between what you marked on your exam and what you submitted on the answer sheet this is understood to be your mistake, not ours.