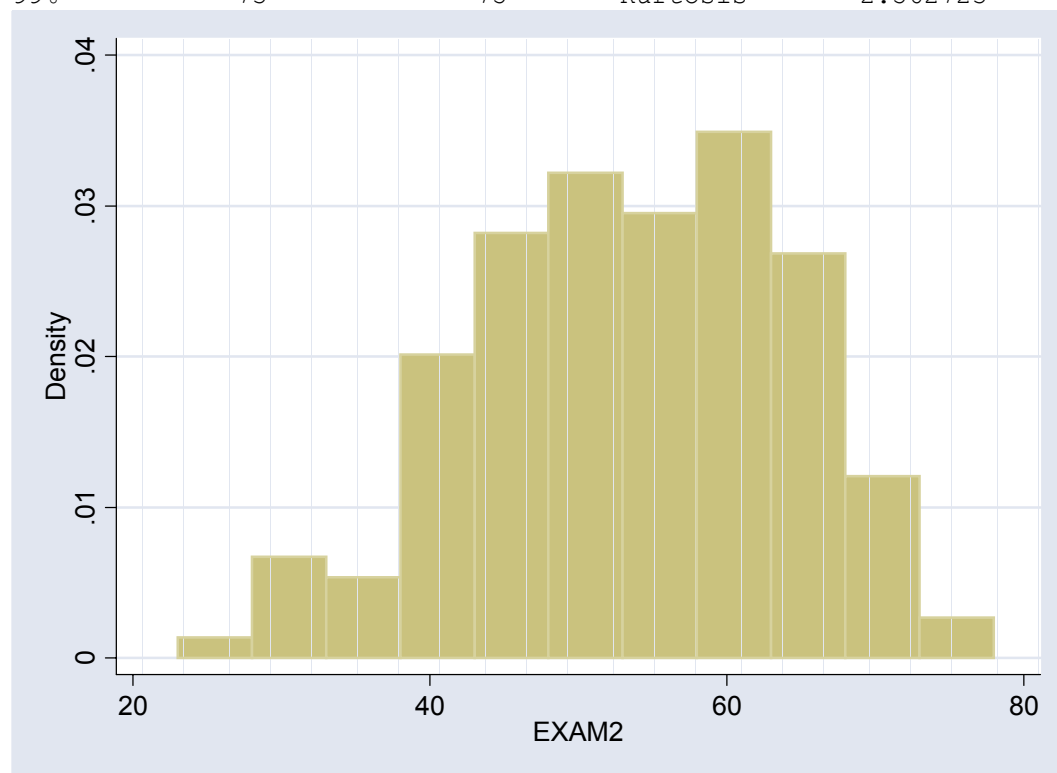


EXAM2					
Percentiles		Smallest			
1%	28	23			
5%	34	28			
10%	40	28	Obs		149
25%	45	30	Sum of Wgt.		149
50%	53		Mean		52.85235
		Largest	Std. Dev.		10.79626
75%	61	71			
90%	67	71	Variance		116.5591
95%	70	73	Skewness		-.2777338
99%	73	75	Kurtosis		2.562723



You could think about your second exam in the following way. All cut-offs are approximate.

75-61 "A" grade

60-50 "B" grade

49-38 "C" grade

below 38 did not pass the second exam

After two exams, you can use these ranges as guidelines:

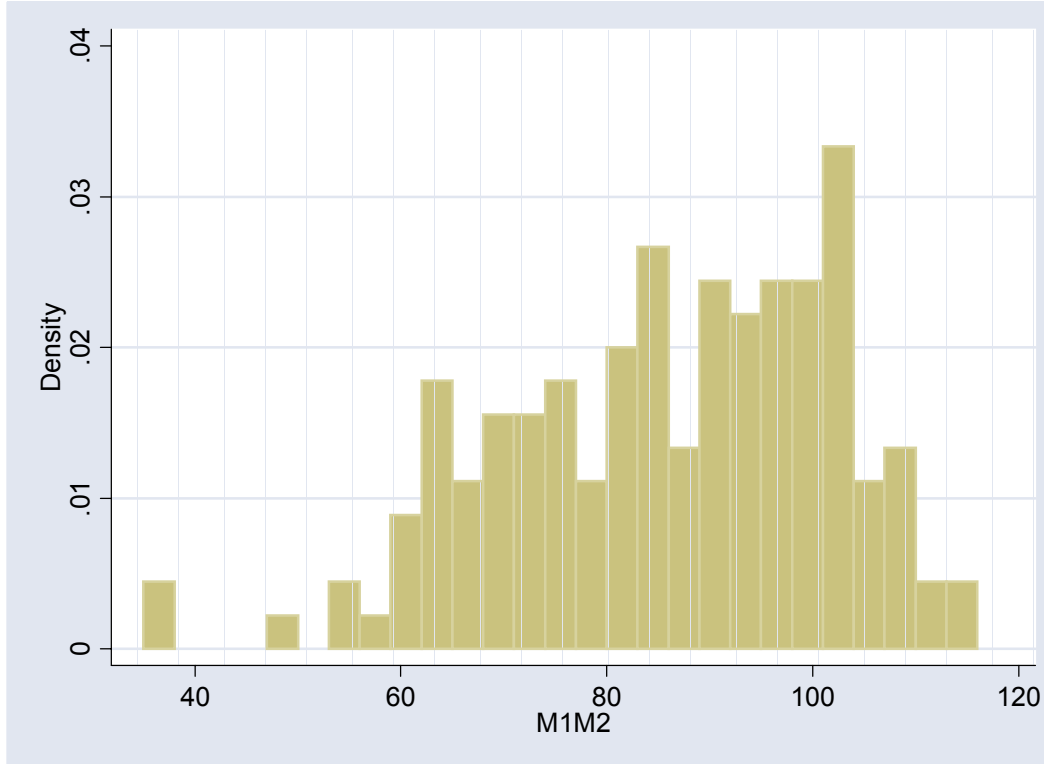
95 and higher "A" grades (minuses on the low end)

94-78 "B" grades (minuses on the low end)

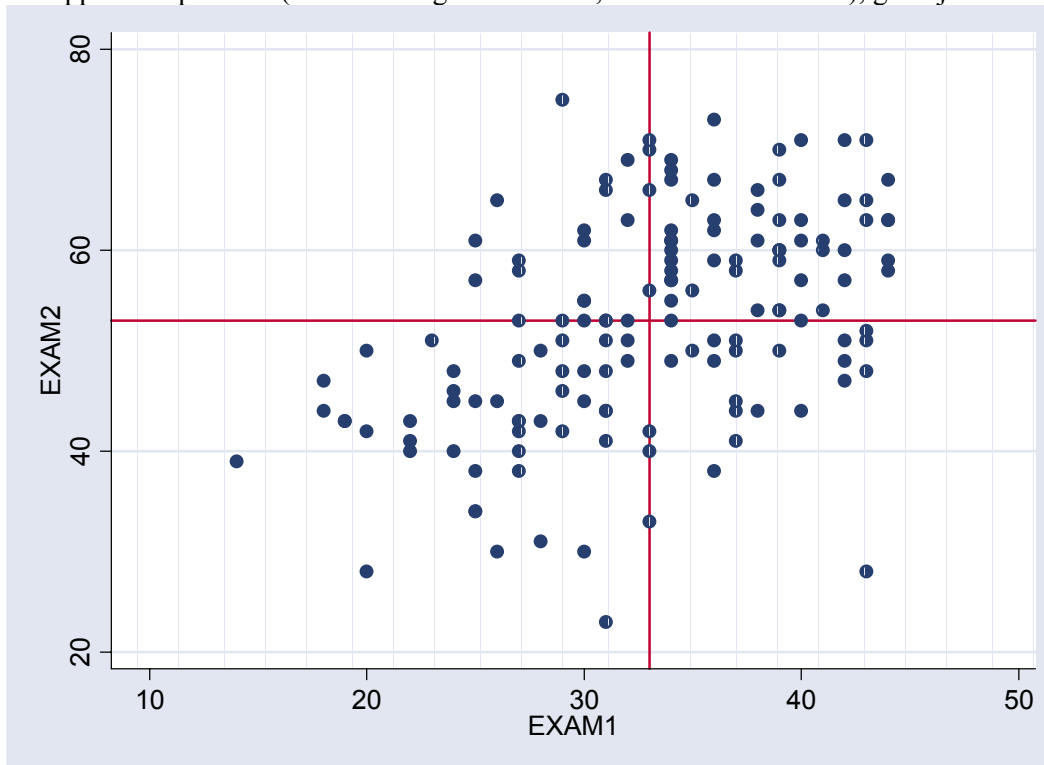
77-59 "C" grades (no minuses)

below 59 not passing the course

The distribution of the combination of the first and second test totals by student is on the next page:



The next graph gives you a sense of who improved and who did not. If your pair of scores lands you in the upper left quadrant (below average on the first, above on the second), good job!



You have until 5pm Nov 25, 2003 to submit a challenge in writing. E-mail is considered "in writing" but I will need your exam to make a decision. Please remember that responses on your answer sheet, which I keep, are considered the final answers for a problem. If there are differences between what you marked on your exam and what you submitted on the answer sheet this is understood to be your mistake, not ours.