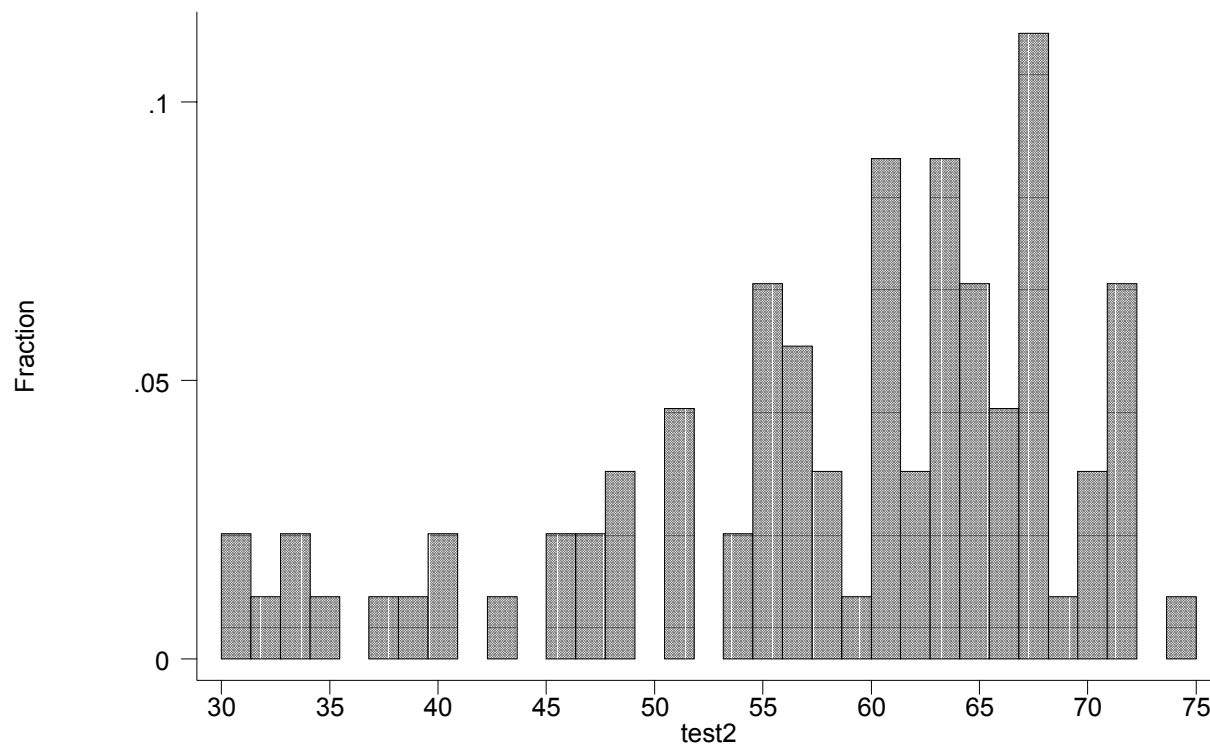


test2					
Percentiles		Smallest			
1%	30	30			
5%	33	30			
10%	40	32	Obs	89	
25%	54	33	Sum of Wgt.	89	
50%	61		Mean	58.06742	
		Largest	Std. Dev.	10.96772	
75%	66	72			
90%	70	72	Variance	120.2909	
95%	72	72	Skewness	-.941368	
99%	75	75	Kurtosis	3.151911	



You could think about your second exam in the following way. All cut-offs are approximate.

68-75 "A" grade

58-67 "B" grade

45-57 "C" grade

below 45 did not pass the second exam

After two exams, you can use these ranges as guidelines:

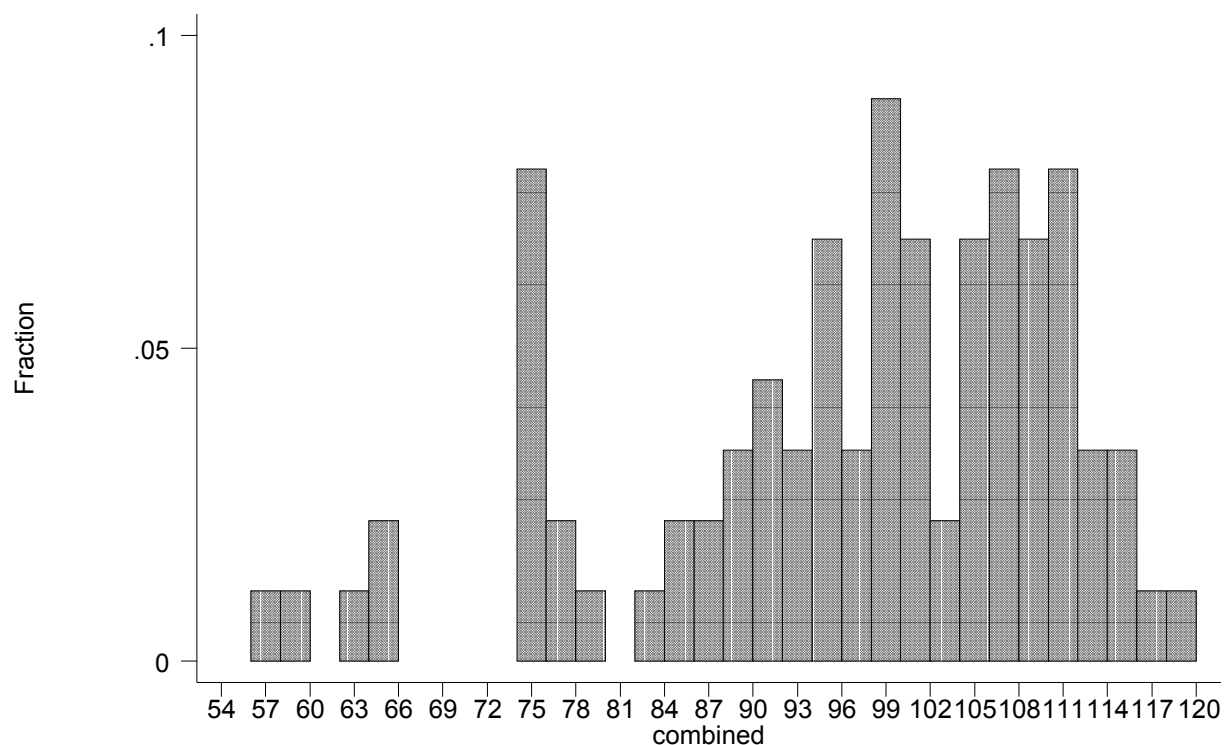
108 and higher "A" grades (minuses on the low end)

95-107 "B" grades (minuses on the low end)

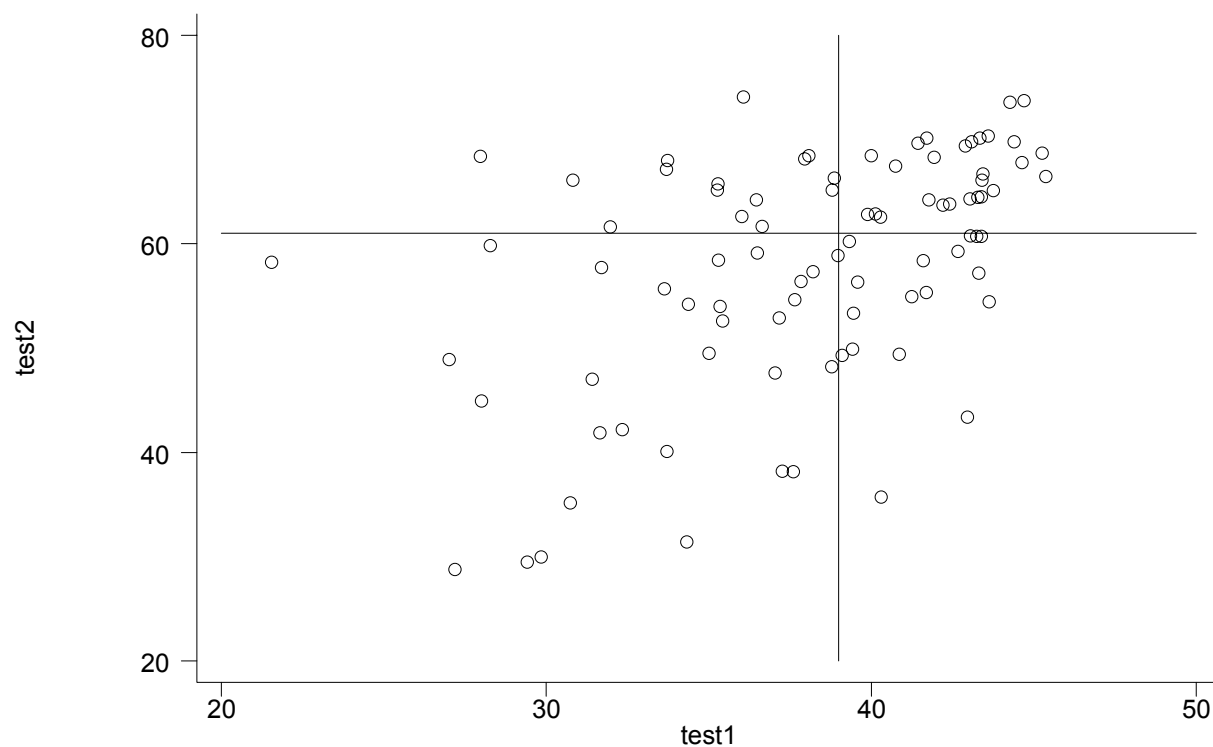
72-94 "C" grades (no minuses)

below 72 not passing the course

The distribution of the combination of the first and second test totals by student is on the next page:



The next graph gives you a sense of who improved and who did not. If your pair of scores lands you in the upper left quadrant, good job! The correlation is (.49)



You have until 5pm on May 29, 2002 to submit a challenge in writing. E-mail is considered "in writing". Please remember that responses on your answer sheet, which I keep, are considered the final answers for a problem. If there are differences between what you marked on your exam and what you submitted on the answer sheet this is understood to be your mistake, not ours.