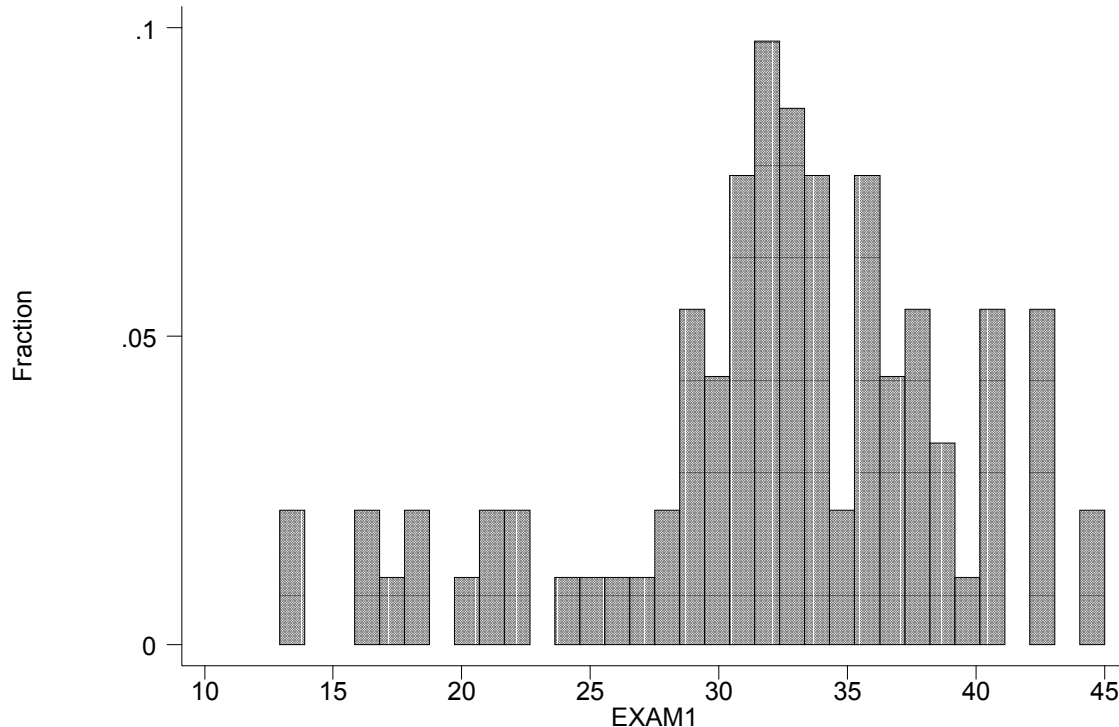


Mean 32.3 Standard Deviation = 7.2
Median 33 75th Percentile 37, 25th Percentile 30
Maximum 45 (2) Minimum 13 (2)



There were 3 forms. There were no meaningful differences in the average scores between forms. On this test, these are approximate breakdowns since discussions of exact grades are meaningless at this time:

45-36 "A" grade there were 32

35-29 "B" grade there were 37

28-20 "C" grade there were 16

below 20 is not passing at this time,

If you scored lower than a 16, you need to consider dropping the course.

If you plan to contest your examination grade, please read the instructions found in the syllabus. You have until 4pm on Feb 5, 2003 to submit a challenge in writing. E-mail is considered "in writing". Please remember that responses on your answer sheet, which I keep, are considered the final answers for any problem. If there are differences between what you marked on your exam and what you submitted on the answer sheet, it is understood to be your copying mistake.

Your Teaching Assistants have been asked to go over the exam with you on February 4th. Answer keys will be posted over the weekend. The multiple choice answers are:

Orange/Gold forms CDADAEAEF

Blue/Purple forms DCEGCCABEA

Gray/Cream forms AFEBCACDCB