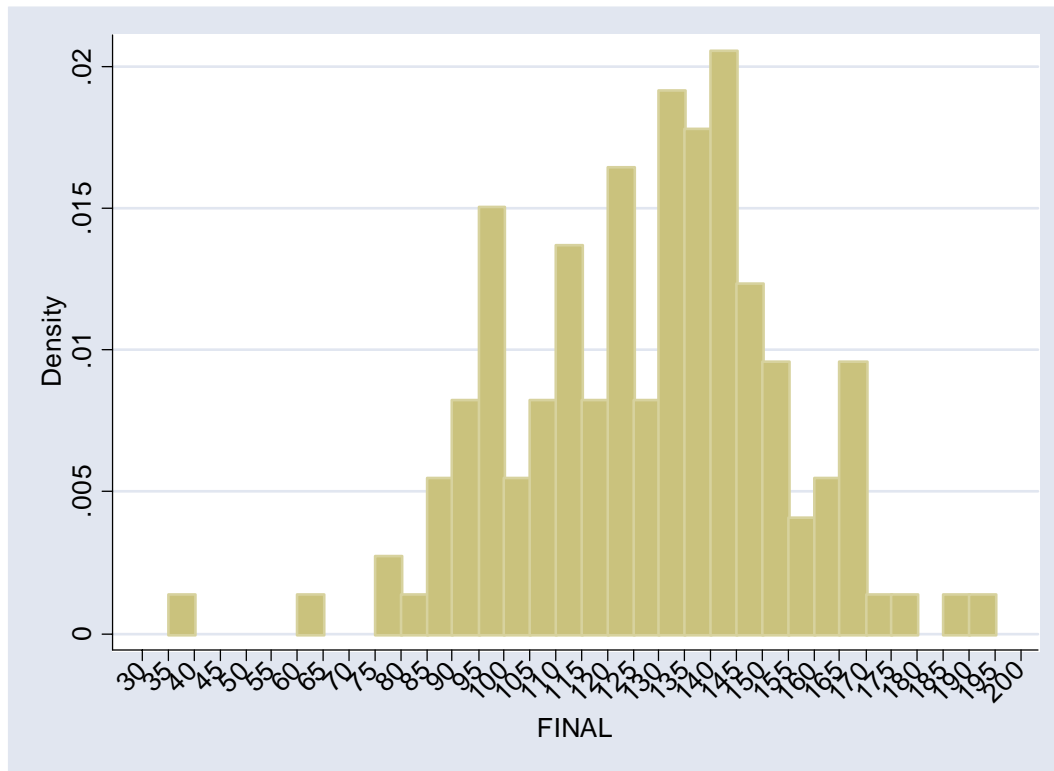


These are the results for the final

Mean 135.5 Median 136 Standard Deviation 19.2 Low 36 High 193



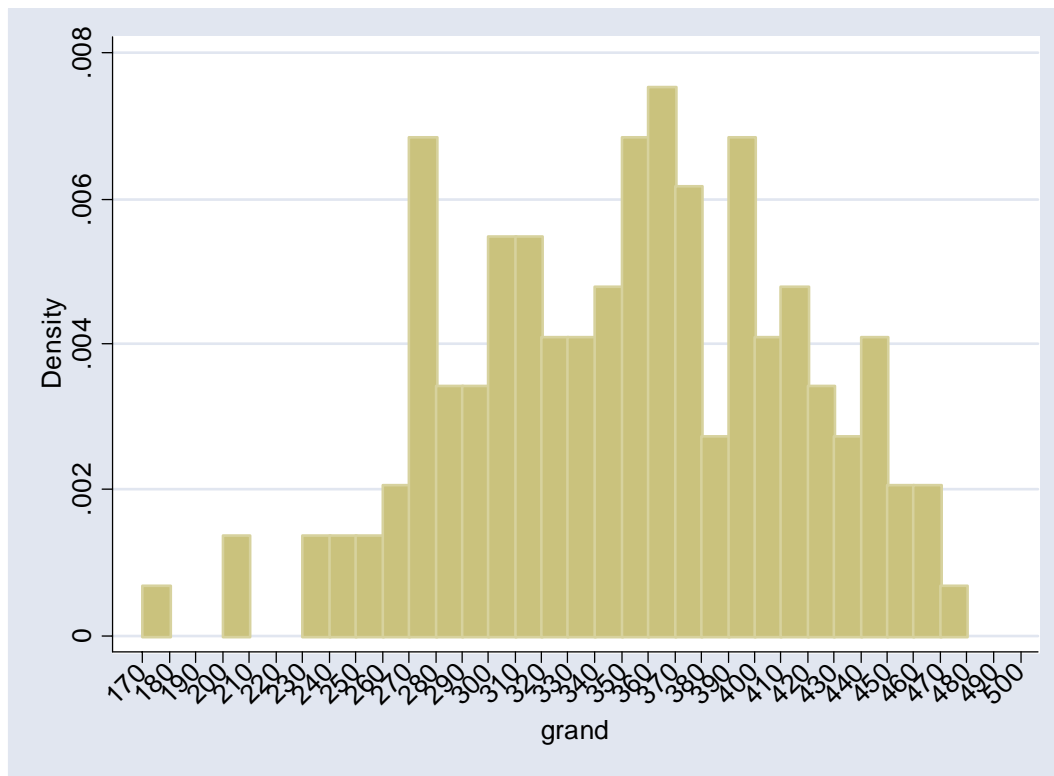
This was the distribution of the final exam scores

200	160	A
159	150	A-
149	146	B+
145	125	B
124	110	B-
109	105	C+
104	93	C
below 93		Failed the Final Exam

For the final grade, your homework scores were rescaled such that getting a 60/60 was the equivalent of getting 100 percent, 59/60 was 98 percent, 58/60 was 97 percent etc. and the percentages were converted to points to make the weighting correct. So 100 percent means add 100 points to your total exam and extra credit score. This is the distribution of final course grades, total possible points is 500.

440-500	A	(about 88-100%)
415-439	A-	(about 83-87.8%)
405-414	B+	(about 81-82.8%)
355-404	B	(about 71-80.4%)
320-354	B-	(about 64-70.8%)
305-319	C+	(about 61-63.8%)
250-304	C	(about 50-60.8%)
below 250	Did Not Pass the Course (less than 50% of the total course points)	

This is a distribution of the total course points



If you wish to discuss your final grade with me or if you wish to see your final (I do not return final exams), please schedule an appointment via e-mail after January 3rd, 2005.

Have a good winter break and a Happy New Year. Best wishes. VL